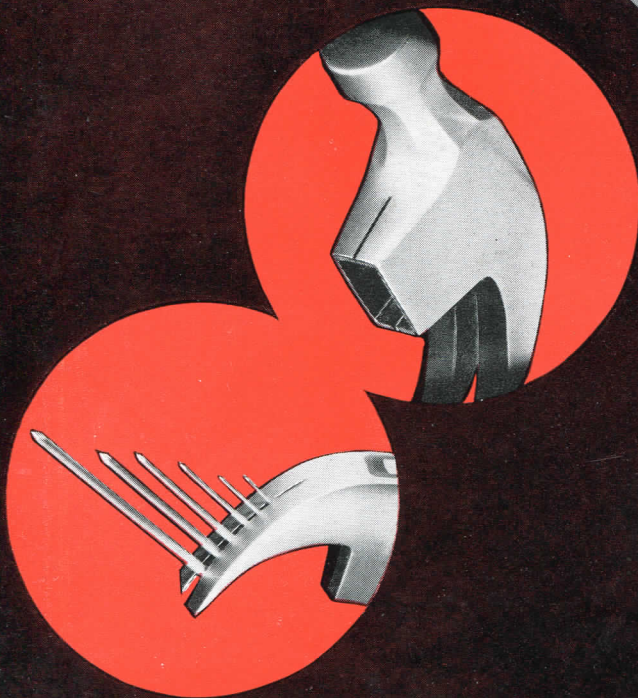


VAUGHAN

hammers



CATALOG AND PRICE LIST
NOVEMBER 16th, 1942



VAUGHAN & BUSHNELL
MANUFACTURING CO.
CHICAGO, ILLINOIS



TERMS, CONDITIONS and PRICES

Subject to change without notice.

This price list cancels all previous quotations.

All orders accepted subject to strikes, fires, unavoidable delays, and our ability to supply.

SETTLEMENTS: 60 days net. Invoices dated between the 1st and 15th of the month inclusive, to be discounted at 2% on or before the 25th of the same month; invoices dated between the 16th and 31st of the same month inclusive, are to be discounted at 2% on or before the 10th of the following month.

All claims for allowances must be made promptly on receipt of goods. Remittances must be made in par funds in Chicago or New York.

Sales in the State of Illinois of items purchased for consumption and not for resale are subject to an additional charge of 2% on account of the Retailers' Occupational Tax Act.

FREIGHT TERMS: Prices on ALL ITEMS are F.O.B. Chicago. Freight equalized with the nearest recognized competing factory. We will allow an additional freight allowance up to 50 cents per 100 pounds on shipments of 100 pounds or more.

On freight shipments direct to jobbers' customers there is no freight equalization or freight allowance and an additional charge of 5% will be made—no charge less than 50 cents. On all other shipments direct to jobbers' customers there is an additional charge of 5%.

Recognized competing factories:

Charleston, W. Va.
Cleveland, Ohio
Evansville, Ind.

Meadville, Pa.
Newark, N. J.
Newcomerstown, O.

Philadelphia, Pa.
Southington, Conn.
Norwich, N. Y.

We will gladly replace, if returned to us, any first quality tool stamped with our name that may prove defective either in material or workmanship.



GENERAL SALES OFFICES
135 So. La Salle St., Chicago, Ill.

BRANCH SALES OFFICES

207 A St.
Boston, Mass.

827 Sheldon Bldg.
San Francisco, Calif.

925 Washington Bldg.
Los Angeles, Calif.

505 Maritime Bldg.
Seattle, Wash.

101 Security Bldg.
Portland, Ore.



NO. 999

NO. 91 1/2

NO. 911 1/2

Vaughan Spring Eye Hammers

"The Hammers With the Shock Absorbing Action"

Spring Eye Hammers are less tiring to use. The Vaughan Patented Spring Eye (Pat. 2,090,164), combined with the special fluted Spring Handle (Pat. 2,184,985 & D-108,709), absorbs the shock, cushions the blow.

The Spring Eye helps keep the handle tight by automatically taking up handle shrinkage. It also reduces the handle breakage that often occurs when the bottom edges of the adze eye cut into the handle.

Vaughan Spring Eye Hammers are perfectly balanced and perfectly made, with a special claw that will grip any size nail from brad to spike.

*999 Electricians' Hammer

Fluted Spring Neck Handle
Octagon Neck. Round Poll.
Polished.

1 1/4 in. diameter head.
Designed for Electricians, Steam Fitters, Plumbers, Millwrights, Cement Workers and Carpenters heavy work. Especially adapted for use on drills and concrete forms.

Straight Claw

No.	Wgt. Oz.	Lgth. In.	Doz. Net
999	20	14	\$16.00

*91 1/2 Hammer

Spring Adze Eye and Fluted
Spring Neck Handle
Octagon Neck. Round Poll.
Polished.

Bell Face Nail

No.	Wgt. Oz.	Lgth. In.	Doz. Net
91 1/2	16	13	**

Ripping

91 1/2 R	16	13	**
----------	----	----	----

*911 1/2 Hammer

Spring Adze Eye and Fluted
Spring Neck Handle
Round Neck. Polished Poll.
Patent Leather Finish.
Gold trim.

Bell Face Nail

No.	Lgth. In.	Wgt. Oz.	Cut	Doz. Net
911 1/2	16	13		**

Ripping

911 1/2 R	16	13	**
-----------	----	----	----

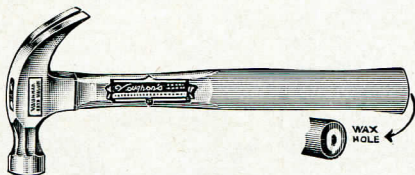
* Packed 4 in a box.

Note: Items marked ** have been discontinued.

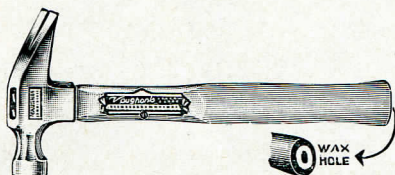
Vaughan Special Octagon Nail Hammers

Vaughan Special Octagon Hammers are the acme of perfection in Nail Hammers. They are the result of seventy years of quality tool manufacture by skilled tool craftsmen. Tens of thousands skilled carpenters will use no other.

Made with Mirror Polish finish, handled with finest second growth octagon neck white hickory handles with exclusive wax hole, and individually tested and inspected—they are uniquely superior.



No. 41 1/2 Special Octagon Nail Hammer



No. 31 1/2 Special Octagon Rip Hammer

Nail

Full Polished.
Octagon Neck. Round Head.
Octagon Neck Handle.
Wax Hole in Handle.

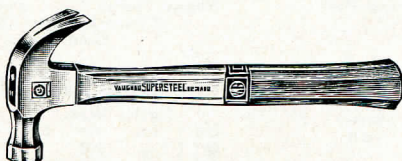
No.	Wgt. oz.	Lgth. in.	Doz. Net
41	20	14	\$16.00
41 1/2	16	13	16.00
42	13	13	16.00

Ripping

31	20	14	**
31 1/2	16	13	**

Packed 4 in a Box

Vaughan Double Octagon Supersteel Nail Hammers



No. D 01 1/2 Double Octagon Nail Hammer

Octagon Neck and Head

No.	Wgt. oz.	Lgth. in.	Doz. Net
01	20	14	\$15.20
01 1/2	16	13	13.20
02	13	13	13.20

With Octagon Handle

D01	20	14	\$15.20
D01 1/2	16	13	13.20
D02	13	13	13.20

Vaughan Supersteel Hammers

Quality—Distinctiveness

Extra Refined Steel—Drop Forged—Tempered Faces and Claws

All Supersteel Nail Hammers have Non-Slip Claw. They will firmly grip any size nail from brad to spike. The eyes are forged smaller toward the center than at the ends, which binds the handle firmly. The sides are crowning and will not dent the wood when matching flooring or wainscoting. The V & B Supersteel is our standard quality and big seller for general use. Trade Mark Reg. U. S. Pat. Off.

Supersteel Brand

Polished
Two-tone Hickory Handles

*Bell Face Nail

No.	Wgt. Oz.	Lgth. In.	Doz. Net
11	20	14	\$14.00
11½	16	13	12.00
12	13	13	12.00
12½	10	12½	**
13	7	12	11.60
14	5	11	**

*Bell Face Ripping

11R	20	14	\$14.00
11½R	16	13	12.00
12R	13	13	**

Plain Face Nail

0	28	14	\$16.30
1	20	14	14.00
1½	16	13	12.00
2	13	13	12.00

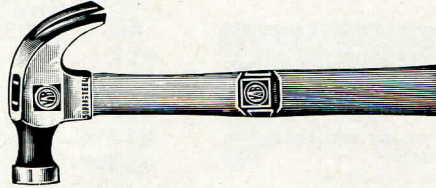
Plain Face Ripping

1R	20	14	\$14.00
1½R	16	13	12.00

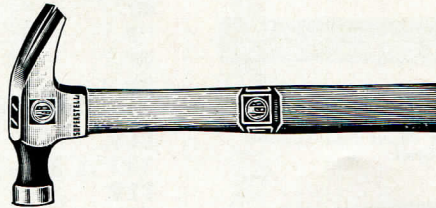
Scored Face Nail

Bell Poll			
211½	16	13	**
Plain Poll			
200	28	14	**
201	20	14	16.00
201½	16	13	14.00

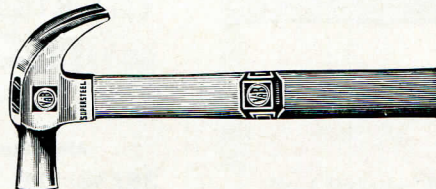
Charge for Polishing Neck of Bell Face
Hammers 65 cents a dozen extra.



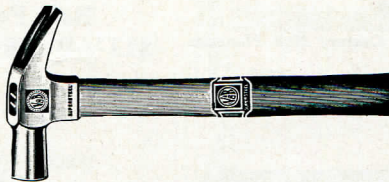
No. 11½ Supersteel Nail Hammer



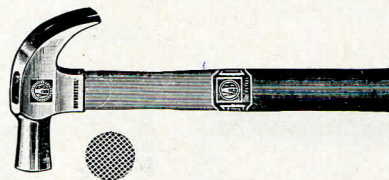
No. 11½R Supersteel Ripping Hammer



No. 1½ Supersteel Plain Face Nail Hammer



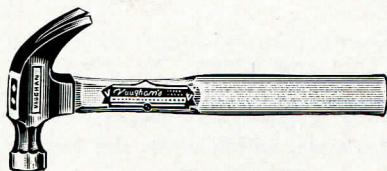
No. 1½R Supersteel Plain Face Ripping Hammer



No. 201½ Supersteel Scored Face Nail Hammer

Note: Items marked ** have been discontinued.

Vaughan Hammers

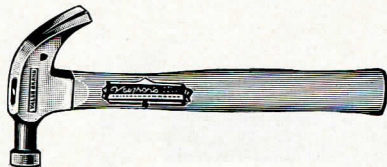


No. 71 1/2 Value Brand Nail Hammer

Value Brand—Octagon Neck

Smooth Black Finish
Round Head
Octagon Neck Handle

No.	Wgt. Oz.	Lgth. In.	Doz. Net
71 1/2	16	13	\$12.00



No. 411 1/2 Value Brand Nail Hammer
Polished

Value Brand—Polished

Lacquered Handle

Bell Face Nail

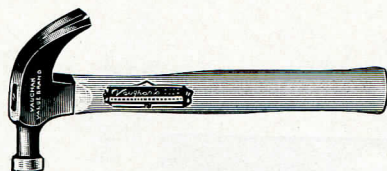
No.	Wgt. Oz.	Lgth. In.	Doz. Net
411	20	14	\$12.00
411 1/2	16	13	10.00
412	13	13	10.00
412 1/2	10	12 1/2	**
413	7	12	9.60

Plain Face Nail

No.	Wgt. Oz.	Lgth. In.	Doz. Net
401	20	14	**
401 1/2	16	13	10.00
402	13	13	**

Ripping

411R	20	14	**
411 1/2R	16	13	10.00



No. 111 1/2 Value Brand Nail Hammer
Black

Value Brand—Black

White Lacquered Handle

Bell Face Nail

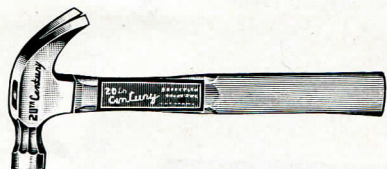
111	20	14	**
111 1/2	16	13	**
112	13	13	**
113	7	12	**

Plain Face Nail

101	20	14	**
101 1/2	16	13	**
102	13	13	**

Ripping

111R	20	14	**
111 1/2R	16	13	**



No. 361 1/2 Twentieth Century Nail Hammer

Twentieth Century—Octagon Neck

Polished

Round Poll—Octagon Neck Handle

Alloy Steel—Polished Neck	Polished Sides—Black Neck
361 1/2 16 13 **	61 1/2 16 13 **



No. 311 1/2B Twentieth Century Nail Hammer

Twentieth Century—Black

White Lacquered Handle

Bell Face Nail

311 1/2B	16	13	\$8.00
----------	----	----	--------

Bell Face Ripping

311 1/2BR	16	13	\$8.00
-----------	----	----	--------

Custom Built

Bell Face

Polished Poll

Black Crinkle Finish

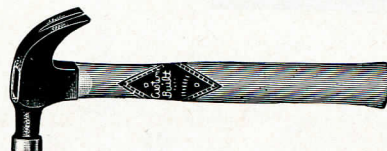
White Lacquered Handle

Nail

711 1/2	16	13	**
713	7	12	**

Ripping

711 1/2R	16	13	**
----------	----	----	----



No. 711 1/2 Custom Built Nail Hammer

*Double Duty

Bell Face

Polished Face

Plain Black Finish

Stained Handle

Nail

611 1/2	16	13	**
---------	----	----	----

Ripping

611 1/2R	16	13	**
----------	----	----	----



No. 611 1/2 Double Duty Nail Hammer

*Packed Doz. to a Box.

Note: Items marked ** have been discontinued.

Vaughan Hammers

Ball Pein Hammers

*Supersteel

Polished.
Two-tone Handles

No.	Wgt. Oz.	Lgth. Ins.	Doz. Net	No.	Wgt. Oz.	Lgth. Ins.	Doz. Net
7/0	2	10 1/4	\$9.35	1	20	15	\$10.70
5/0	4	11	9.35	2	24	16	11.60
4/0	6	12	9.35	3	28	17	**
3/0	8	13	9.80	4	32	17	13.40
2/0	12	14	9.80	6	40	17 1/2	15.05
0	16	14	10.25	8	48	17 1/2	**

*Value Brand

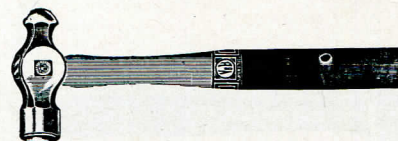
Black Finish
White Lacquered Handles

No.	Wgt. Oz.	Lgth. Ins.	Doz. Net
7/0 B	2	10 1/4	**
5/0 B	4	11	7.55
4/0 B	6	12	7.55
3/0 B	8	13	8.00
2/0 B	12	14	8.00
0 B	16	14	8.45
1 B	20	15	8.90
2 B	24	16	9.35
3 B	28	17	**
4 B	32	17	10.95
6 B	40	17 1/2	12.05
8 B	48	17 1/2	**

Twentieth Century

Black Forged
Finish
Natural Finish Handles

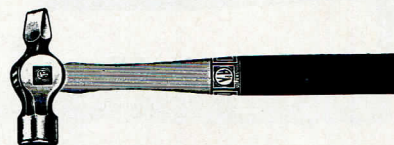
No.	Wgt. Oz.	Lgth. Ins.	Doz. Net
TC5/0	4	11	**
TC3/0	8	13	**
TC2/0	12	14	7.05
TC0	16	14	7.50
TC1	20	15	7.95
TC2	24	16	8.40
TC3	28	17	**
TC4	32	17	9.30
TC6	40	17 1/2	**
TC8	48	17 1/2	**



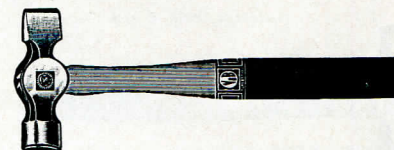
No. 2 Ball Pein Hammer



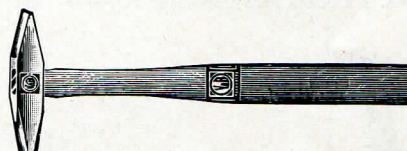
No. 2B Ball Pein Hammer



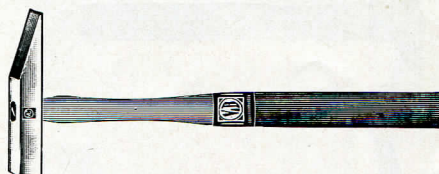
No. 2 Cross Pein Hammer



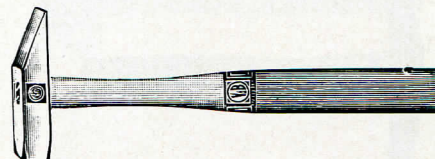
No. 2 Straight Pein Hammer



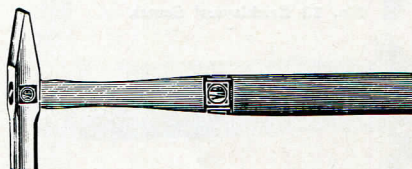
No. 1 Machinists' Riveting Hammer



No. 1 Tile Setters' Hammer



No. 1 Tinnners' Panceing Hammer



No. 1 Tinnners' Riveting Hammer

*Cross Pein

Polished.

No.	Wgt. Oz.	Lgth. Ins.	Doz. Net
2	24	16	\$14.30
4	32	17	16.30

*Straight Pein

Polished.

No.	Wgt. Oz.	Lgth. Ins.	Doz. Net
2	24	16	\$14.30
4	32	17	16.30

Machinists' Riveting

Polished.

No.	Wgt. Oz.	Lgth. Ins.	Doz. Net
0	4	11	\$9.80
1	7	12	9.80
2	9	13	11.15
3	12	13	11.15
4	15	14	12.05
5	18	14	12.95

Tile Setters'

Polished.

No.	Wgt. Oz.	Lgth. Ins.	Doz. Net
1	3	9 1/2	\$8.48

Saw Setting

Polished.

No.	Wgt. Oz.	Lgth. Ins.	Doz. Net
1	8	12	\$10.00

Tinnners' Panceing

Polished.

No.	Wgt. Oz.	Lgth. Ins.	Doz. Net
1	8	13	**
2	12	14	11.15
3	16	15	12.05
4	20	16	**

Tinnners' Riveting

Polished.

No.	Wgt. Oz.	Lgth. Ins.	Doz. Net
1	8	13	\$11.15
2	12	14	11.15
3	16	15	12.05
4	20	16	**

*Packed 4 in a box.

Note: Items marked ** have been discontinued.

Vaughan Hammers

Supersteel

Twentieth Century

*Blacksmiths' Hand



No. 2 Blacksmiths' Hand Hammer

Polished.				Oil Finish.			
No.	Wgt. Oz.	Lgth. Ins.	Doz. Net	No.	Wgt. Oz.	Lgth. In.	Doz. Net
0	24	15	\$12.85	TC0	24	15	\$8.55
1	32	16	13.35	TC1	32	16	8.55
2	40	16	14.70	TC2	40	16	10.35
3	48	17	16.05	TC3	48	17	11.25
5	64	17	**	TC5	64	17	**

*Single Face Engineers



No. 1 Single Face Engineers' Hammer

Polished.				Oil Finish.			
No.	Wgt. Oz.	Lgth. Ins.	Doz. Net	No.	Wgt. Oz.	Lgth. In.	Doz. Net
1	24	15	\$12.85	TC1	24	15	\$8.55
2	32	16	13.35	TC2	32	16	8.55
3	40	16	14.70	TC3	40	16	10.35
4	48	17	16.05	TC4	48	17	11.25

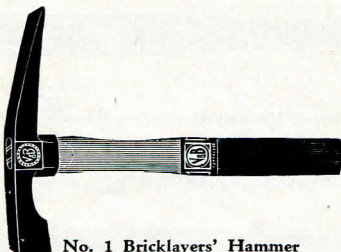
*Double Face Engineers



No. 3 Double Face Engineers' Hammer

Polished.				Oil Finish.			
No.	Wgt. Oz.	Lgth. Ins.	Doz. Net	No.	Wgt. Oz.	Lgth. In.	Doz. Net
2	40	16	\$14.70	TC1	32	16	**
3	48	17	16.05	TC2	40	16	10.35
				TC3	48	17	11.25
				TC5	64	17	**

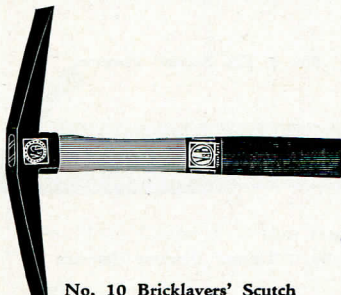
*Bricklayers' Hammers



No. 1 Bricklayers' Hammer

Smooth Black Finish				Black Finish			
No.	Wgt. Oz.	Lgth. Ins.	Doz. Net	No.	Wgt. Oz.	Lgth. In.	Doz. Net
0	20	10 1/2	**	TC1	24	11	\$10.40
1	24	11	13.20	TC2	32	11	11.20
2	32	11	14.40				

*Bricklayers' Scutches



No. 10 Bricklayers' Scutch

Smooth Black Finish			
No.	Wgt. Oz.	Lgth. Ins.	Doz. Net
10	24	11	\$16.00
12	32	11	**

Shoe



No. 1 Shoe Hammer

Polished.				Black Finish			
No.	Wgt. Oz.	Lgth. Ins.	Doz. Net	No.	Wgt. Oz.	Lgth. In.	Doz. Net
1	14	10	**	1 B	14	10	**

*Packed 4 in a box.

Note: Items marked ** have been discontinued.

Vaughan Hammers

Bill Posters'

Magnetic

No.	Wgt. Oz.	Lgth. In.	Doz. Net
45	4	11 1/2	**
55	5	11 1/2	9.85
85	8	11 1/2	11.11
95	10	11 1/2	**
56	5	36	**
86	8	36	**

Bill Posters' Hammer Heads

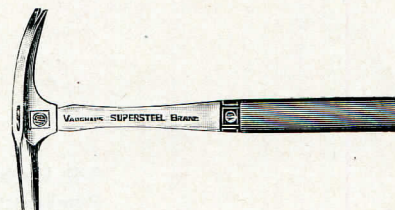
No.	Wgt. Oz.	Lgth. In.	Doz. Net
50	5	4	**
80	8	4 1/2	**

Bill Posters' Hammer Handles

J 36	36	\$14.50
Tack Spring.....		1.18
Card Spring.....		.68



No. 45 Bill Posters' Hammer



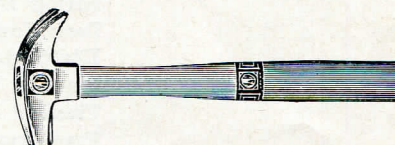
No. 4 Tack Hammer



No. 5 Tack Hammer



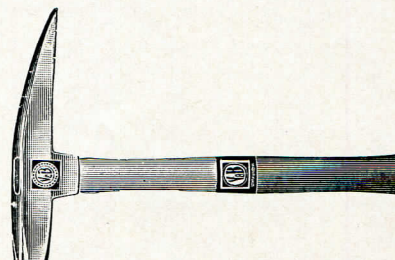
No. 6 Tack Hammer



No. 10 Farriers' Hammer



No. 0 Farriers' Turning Hammer



No. 1 Prospecting Pick

Tack

Non-Magnetic

Polished.
(Head has driving face and claw)

No.	Wgt. Oz.	Lgth. In.	Doz. Net
4	6	11 1/2	**

Magnetic

Polished Finish.

(Head has magnetic driving face and claw)

No.	Wgt. Oz.	Lgth. In.	Doz. Net
5	4	11 1/2	\$10.13

Magnetic

Black Finish.

(Head has magnetic driving face and claw)

No.	Wgt. Oz.	Lgth. In.	Doz. Net
25	4	11 1/2	**

Magnetic

(One end has driving face and one end has magnetic face)

No.	Wgt. Oz.	Lgth. In.	Doz. Net
6	7	11 1/2	\$14.96
16	7	11 1/2	**

No. 16 has claw on end of handle.

Farriers'

Polished.

10	10	13	\$14.00
12	12	14	**

*Farriers' Turning

Polished Heads. Black Body.

0	36	15	\$24.00
---	----	----	---------

*Prospecting Picks

Supersteel

Polished.

No.	Wgt. Oz.	Lgth. In.	Doz. Net
1	16	13	\$17.20
2	24	13	18.53

Twentieth Century

Black Finish.

No.	Wgt. Oz.	Lgth. In.	Doz. Net
TC1	16	13	**
TC2	24	13	**

*Packed 4 in a box.

Note: Items marked ** have been discontinued.

INDEX

	Page
Bill Posters' Hammers	7
Blacksmiths' Hand Hammers	6
Bricklayers' Hammers	6
Bricklayers' Scutch Hammers	6
Bricklayers' Scutches	6
Electricians' Hammers	1
Engineers' Single Face Hammers	6
Engineers' Double Face Hammers	6
Farriers' Hammers	7
Farriers' Turning Hammers	7
Machinists' Ball Pein Hammers	5
Machinists' Cross Pein Hammers	5
Machinists' Straight Pein Hammers	5
Machinists' Riveting Hammers	5
Magnetic Hammers	7
Nail Hammers1, 2, 3, 4	4
Prospecting Hammers	7
Prospecting Picks	7
Ripping Hammers1, 2, 3, 4	4
Saw Setting Hammers	5
Shoe Hammers	6
Spring Eye Hammers	1
Tack Hammers	7
Tile Setters' Hammers	5
Tinners' Paneing Hammers	5
Tinners' Riveting Hammers	5
Tradesman's 999 Hammers	1

GENERAL INFORMATION

Black and white two-tone handles—Trade Mark Reg. U. S. Pat. Off.

Brown and white two-tone handles—Trade Mark Reg. U. S. Pat. Off.

V & B Handle Label—Trade Mark Reg. U. S. Pat. Off.

An extra charge of 25 cents is made for broken packages.

PACKING AND SHIPPING INFORMATION

The shipping weight of Nail Hammers should
be figured at 20 pounds per dozen. All other
Hammers, 25 pounds per dozen.

Weights shown on Hammers do not include handles.

*All tools are packed one-half dozen in a box unless otherwise
indicated on price list.*